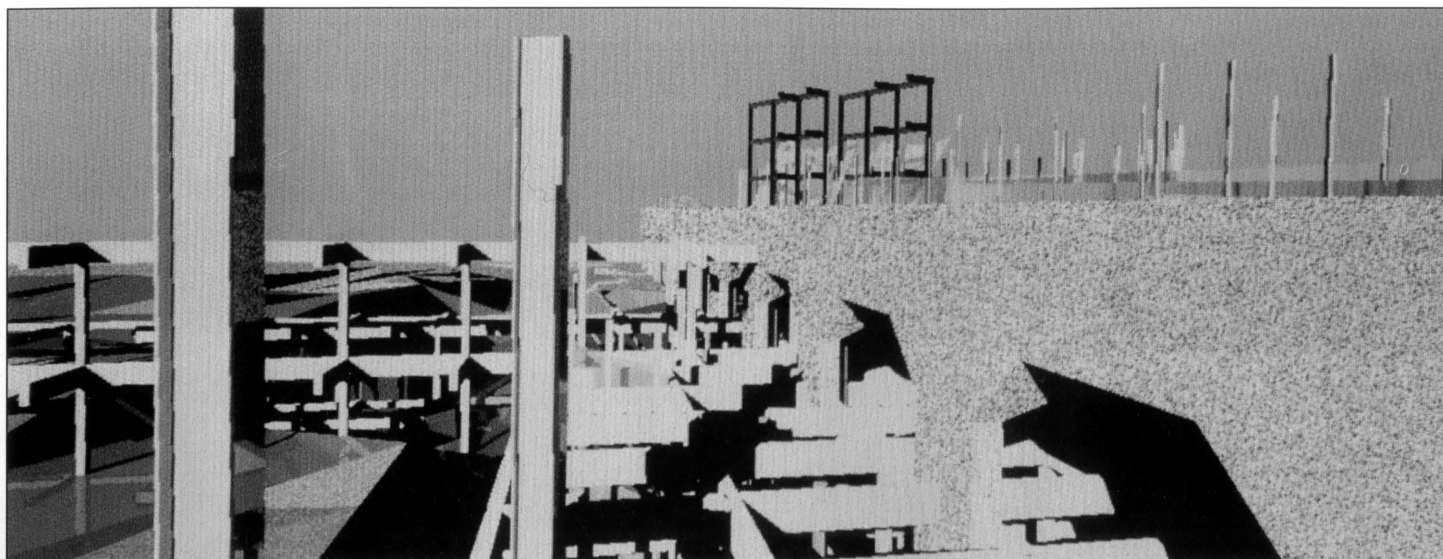


# LANDSCAPE ARCHITECTURE



42

41	<b>COVER STORY</b>	Visionary and unbuilt landscapes
42	<b>Award Winners</b>	Four somber visions and one whimsical
52	<b>Other Visions</b>	Three entries that provoked much debate
54	<b>LA Forum</b> <i>by J. William Thompson</i>	Excerpts from a tough jury at work
120	<b>Prospect</b> <i>by Deborah E. Ryan</i>	A critical look at the projects selected
58	<b>DESIGN</b>	New urban parks
60	<b>Panacea in Needle Park</b> <i>by Eve Kahn</i>	Bryant Park gets an overhaul in downtown Manhattan
62	<b>BPC's Latest: Hudson River Park</b> <i>by Mac Griswold</i>	Battery Park City's last open space is a mixed bag
65	<b>There Was a Parking Lot ...</b> <i>by Julia Collins</i>	A garage goes underground for Boston's Post Office Square
68	<b>Anniversary Gift</b> <i>by Derek Drummond</i>	Montreal's newest park proves almost too popular
70	<b>Front Porch on the River</b> <i>by Robert Ivy</i>	Ross's Landing melds Chattanooga's past and future

## TECHNIQUE & PRACTICE

74

### Restoring the Northeastern Meadow *by Elizabeth Bartels*

Site preparation and planting techniques

## DEPARTMENTS

16	Letters	38	Critic-at-Large	118	Reader Service Index
24	News	79	Buyer's Guide	119	Product News
32	Global Landscape	116	Classifieds		

**ON THE COVER:** "Life After Death," an "organic" cemetery designed by New Zealand landscape architect Jackie Bowring. Ink and Prismacolor on mylar.

Landscape Architecture (ISSN 0023-8031) is published monthly by the American Society of Landscape Architects, copyright 1992. Second-class postage paid at Washington, DC, and additional mailing offices. **SUBSCRIPTIONS:** U.S.: \$42/year, \$80/2 years. Canada and foreign surface mail: \$70/year, \$132/2 years. Airmail: \$125/year, \$238/2 years. Students: \$32/year. Single copies \$7. Send U.S. funds to Landscape Architecture, 4401 Connecticut Ave., NW, 5th Floor, Washington, DC 20008-2302. Telephone (202) 686-2752. ASLA members: \$21 of dues is designated for magazine subscription; please direct your inquiries to the Membership Department.

**POSTMASTER:** Send address changes to *Landscape Architecture*, 4401 Connecticut Ave., NW, 5th Floor, Washington, DC 20008-2302.